



LODESTAR®

CAPACITIES
1/8 to 2 Ton

LIFT
60 feet standard
(other lifts available)

SPEEDS
5 to 100 feet/minute

VOLTAGES
1-phase
& 3-phase available

From world touring rock concerts and Broadway musicals to Las Vegas shows and sporting events, the CM Lodestar is the trusted industry workhorse.

KEY FEATURES

5 POCKET LIFTWHEEL

Improved chain wear & smooth lifting

CLUTCH OUTSIDE GEAR TRAIN

Meets international standards

PRECISION HELICAL GEARING

For quieter operation

REDESIGNED CONTROL PANEL

For easier access

STANDARD FEATURES

HEAVY DUTY DC BRAKE

Designed for a long service life, the brake location allows for quick access & easy inspection.

LOW VOLTAGE CONTROL

110 Volt for long cable runs without voltage drop. 24 & 48 Volt optional. (Low Voltage Unit Only)

DURABLE AND LIGHTWEIGHT HOUSING

Cast aluminum. Black powder coated finish for low visibility.

GEARING

Helical design for long wear life and smooth operation.

LOAD CHAIN

Zinc plated to protect against corrosion. Optional black finish available.

DUTY CYCLE

H-4 duty rated for heavy duty application. 2M+ FEM class. 50% Duty Cycle or 300 on/off per hour.

ELECTRICAL

Finger safe wiring meets all electrical codes. Plug and play connectors allow for voltage change from 208 to 460 and prevent improper voltage connections. (Low Voltage Unit Only)

ADJUSTABLE LIMIT SWITCH

Adjustable screw limit switch automatically stops the hook at any predetermined point when lifting or lowering, to prevent overtravel. (Low Voltage Unit Only)

OVERLOAD PROTECTOR

Designed to prevent lifting of excessive overloads.

METRIC RATED

MEETS REQUIREMENTS

Meets or exceeds world standards.

ROAD READY

Easy to stow and travel.

LIFETIME WARRANTY

The industry's best.

OPTIONAL FEATURES

DOUBLE DC BRAKE

Two independent acting DC brakes for redundant braking. Field installation kit available.

AC ELECTRIC BRAKE

Incremental & Absolute.

CHAIN BAGS

Cloth type bags easy-to-mount.

VARIABLE SPEED UNITS AVAILABLE

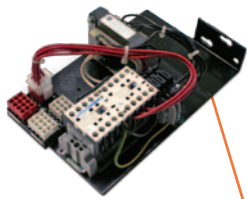
ALLOY LATCHLOK HOOKS

Remains locked until released by the operator, even if chain goes slack.

DIRECT CONTROL UNIT OPTION

The CM Lodestar is available as a Direct Control Unit. Featuring a single cable, this Direct Control Unit can be used as part of a system with multiple units with a single control. The Lodestar is compatible with most Direct Control Motor Controllers.





CONTROL PANEL
Provides easy access to controls, plug and play connectors allow for quick voltage change for dual voltage motors. Fuses located on terminal strip (optional).

LIFTWHEEL
5 Pocket Liftwheel increases chain and liftwheel engagement while providing smoother lifting, less vibration and reduced chain wear when properly maintained.

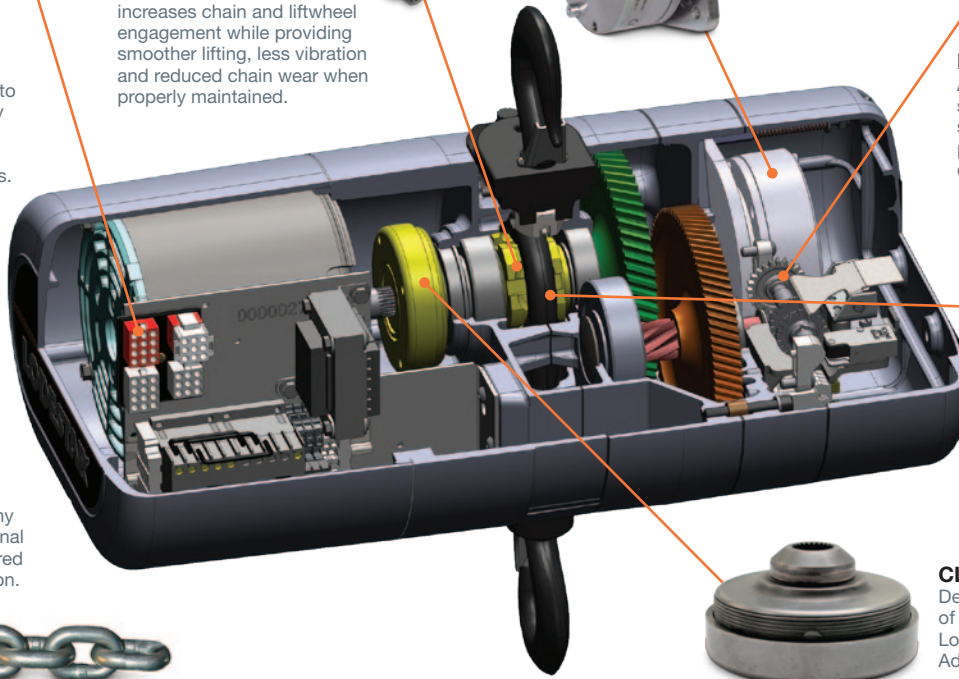


BRAKE
Heavy Duty DC Brake is standard. AC Brake and Double DC Brake are also available.



LIMIT SWITCH
Adjustable screw limit switch that will automatically stop the hook at any predetermined point when either hoisting or lifting.

LOAD CHAIN
Sizes available from 1/4 in. to 5/16 in. Meets or exceeds many national and international standards. Manufactured by Columbus McKinnon. 100% proof tested.



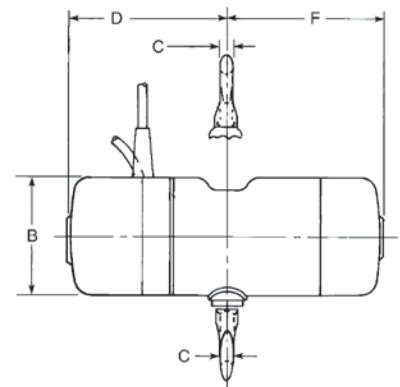
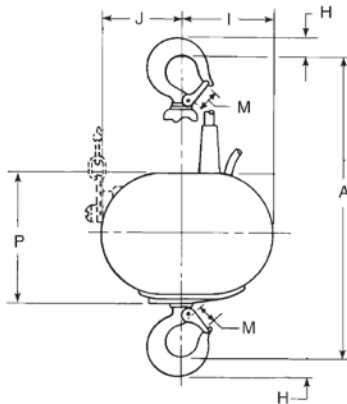
INTERNAL CHAIN GUIDE
Stamped Steel guide coated for corrosion resistance and quiet operation, while keeping the load chain and liftwheel aligned.



CLUTCH
Designed to prevent lifting of excessive overloads. Located outside the gear box. Adjustable and easy to access.

DIMENSIONS

| Drawing Legend | Lodestar Models | | |
|----------------|-----------------|--------------|---------|
| | B, C, F | J, JJ, L, LL | R, RR |
| A | 16.20" | 18.5625" | 24.125" |
| B | 6.08" | 7.62" | 7.62" |
| C | .67" | .875" | 1.125" |
| D | 11.80" | 10.03" | 10.03" |
| F | 8.94" | 13.01" | 13.01" |
| H | 1" | 1.1875" | 1.5" |
| I | 4.46" | 6.93" | 5.57" |
| J | 4.22" | 5.69" | 7.05" |
| M | 1" | 1.125" | 1.3125" |
| P | 6.62" | 8.22" | 8.22" |



SPECIFICATIONS

| Model | Rated Load (Ton) * | Lifting Speed (FPM) | Motor HP | Operating Voltage ** | Full Load Amps | Work Rating | | Reeving | Protection Class | Noise Level | Lift (Feet) *** |
|-------|-----------------------|---------------------|----------|-------------------------|----------------|-------------|-----|---------|------------------|-------------|--------------------|
| | | | | | | HMI | FEM | | | | |
| B | 1/4 | 16 | 1/4 | 230/460-3-60 | 1.8/1.1 | H4 | 2M+ | 1 | IP54 | 73 dB | 60 |
| C | 1/4 | 32 | 1/2 | 230/460-3-60 | 2.2/1.3 | H4 | 2M+ | 1 | IP54 | 73 dB | 60 |
| F | 1/2 | 16 | 1/2 | 230/460-3-60 | 2.2/1.3 | H4 | 2M+ | 1 | IP54 | 73 dB | 60 |
| J | 1/2 | 32 | 1 | 230/460-3-60 | 3.7/2.2 | H4 | 2M+ | 1 | IP54 | 73 dB | 60 |
| JJ | 1/2 | 64 | 2 | 230/460-3-60 | 7.9/5.0 | H4 | 2M+ | 1 | IP54 | 73 dB | 60 |
| L | 1 | 16 | 1 | 230/460-3-60 | 3.7/2.2 | H4 | 2M+ | 1 | IP54 | 73 dB | 60 |
| LL | 1 | 32 | 2 | 230/460-3-60 | 7.9/5.0 | H4 | 2M+ | 1 | IP54 | 73 dB | 60 |
| R | 2 | 8 | 1 | 230/460-3-60 | 3.7/2.2 | H4 | 2M+ | 2 | IP54 | 73 dB | 60 |
| RR | 2 | 16 | 2 | 230/460-3-60 | 7.9/5.0 | H4 | 2M+ | 2 | IP54 | 73 dB | 60 |

* Metric Tons

** Single Phase Models available

*** Lifts other than 60 ft. available
(Standard Units shipped less chain unless specified)

Consult factory for additional speeds and capacities



COLUMBUS MCKINNON CORPORATION ENTERTAINMENT PRODUCTS

USA 800.888.0985 | +1 716.689.5400 | Fax +1 716.689.5644 | www.cm-et.com