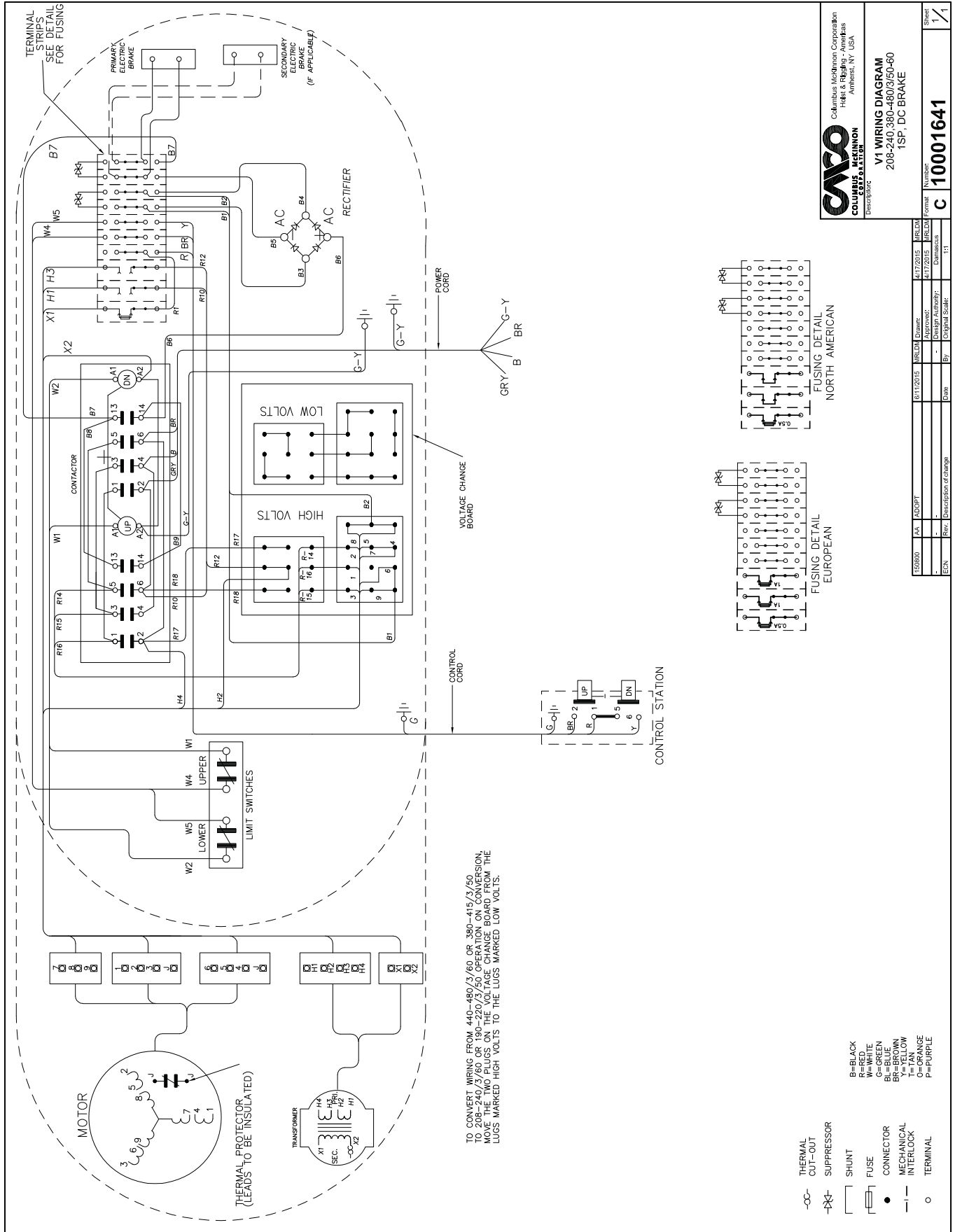


FIGURE 20. TYPICAL WIRING DIAGRAMS

Wiring Diagrams shown are representative. Consult diagram in hoist or furnished with unit.



CALPICO
 Columbus McKinnon Corporation
 Hoist & Elevator - Americas
 Amherst, NY, USA

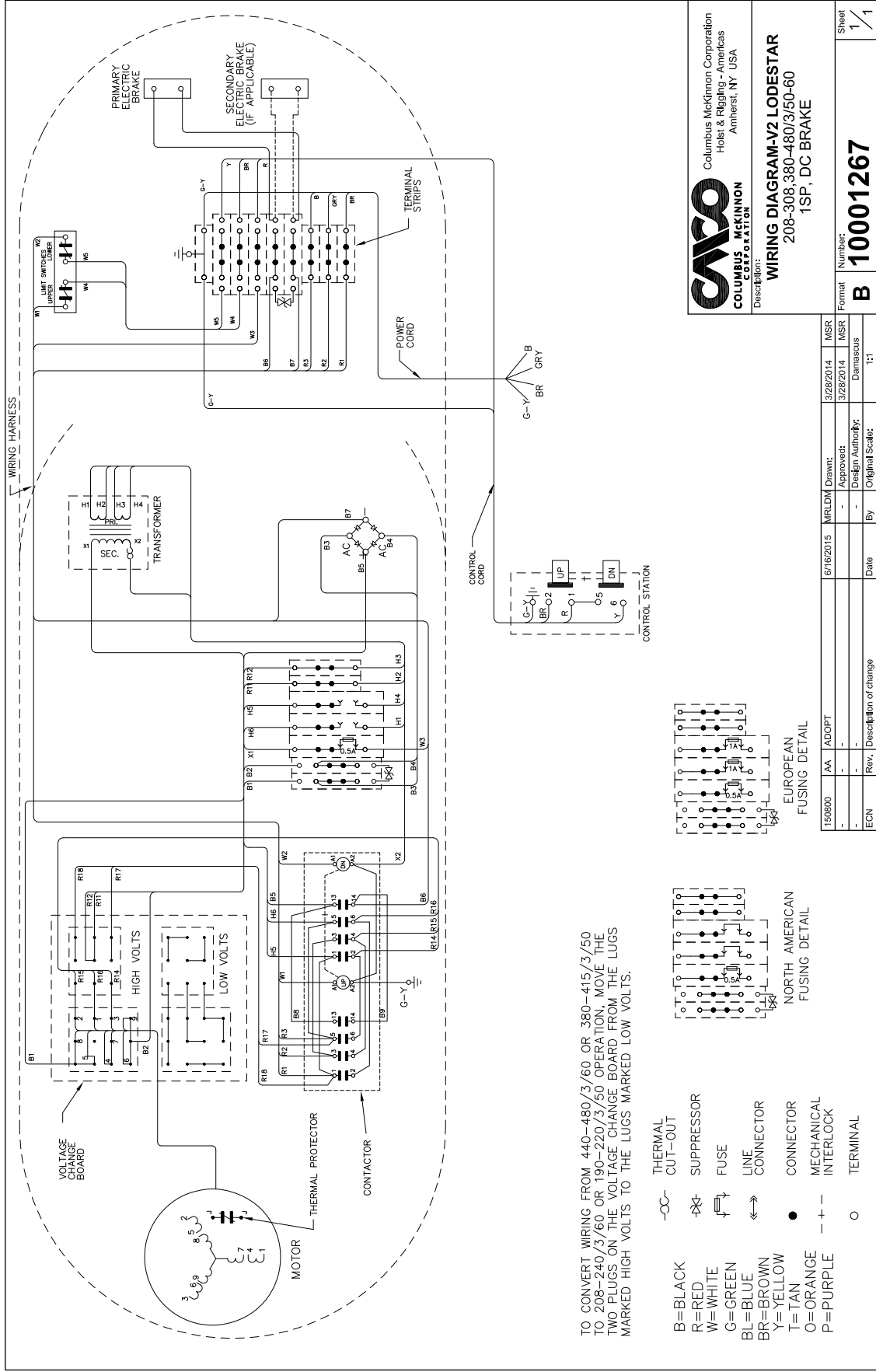
V1 WIRING DIAGRAM
 208-240-360-480/3/50-60
 1SF, DC BRAKE

Number: **C 10001641**
 Form: **C**
 Sheet: **1/1**

ECN	Rev.	Date	By	Original Scale	Drawn	Checked	Appr.	MRLDN	MRLDN	MRLDN
180800	04	10/07/2015	BR		BR			4/17/2015	4/17/2015	4/17/2015

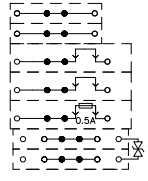
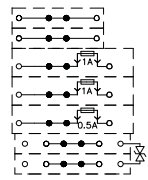
FIGURE 21. TYPICAL WIRING DIAGRAMS

Wiring Diagrams shown are representative. Consult diagram in hoist or furnished with unit.



TO CONVERT WIRING FROM 440-480/3/60 OR 380-415/3/50 TO 208-240/3/60 OR 190-220/3/50 OPERATION, MOVE THE TWO PLUGS ON THE VOLTAGE CHANGE BOARD FROM THE LUGS MARKED HIGH VOLTS TO THE LUGS MARKED LOW VOLTS.

- B=BLACK
 - R=RED
 - W=WHITE
 - G=GREEN
 - BL=BLUE
 - BR=BROWN
 - Y=YELLOW
 - O=ORANGE
 - P=PURPLE
- THERMAL CUT-OUT
 - x— SUPPRESSOR
 - f— FUSE
 - <>— LINE CONNECTOR
 - CONNECTOR
 - +— MECHANICAL INTERLOCK
 - TERMINAL



CMS Columbus McKinnon Corporation
 Columbus McKinnon Corporation
 Hoist & Rigging - Americas
 Amherst, NY USA

WIRING DIAGRAM-V2 LODESTAR
 208-308,380-480/3/50-60
 1SP, DC BRAKE

Number: **10001267**

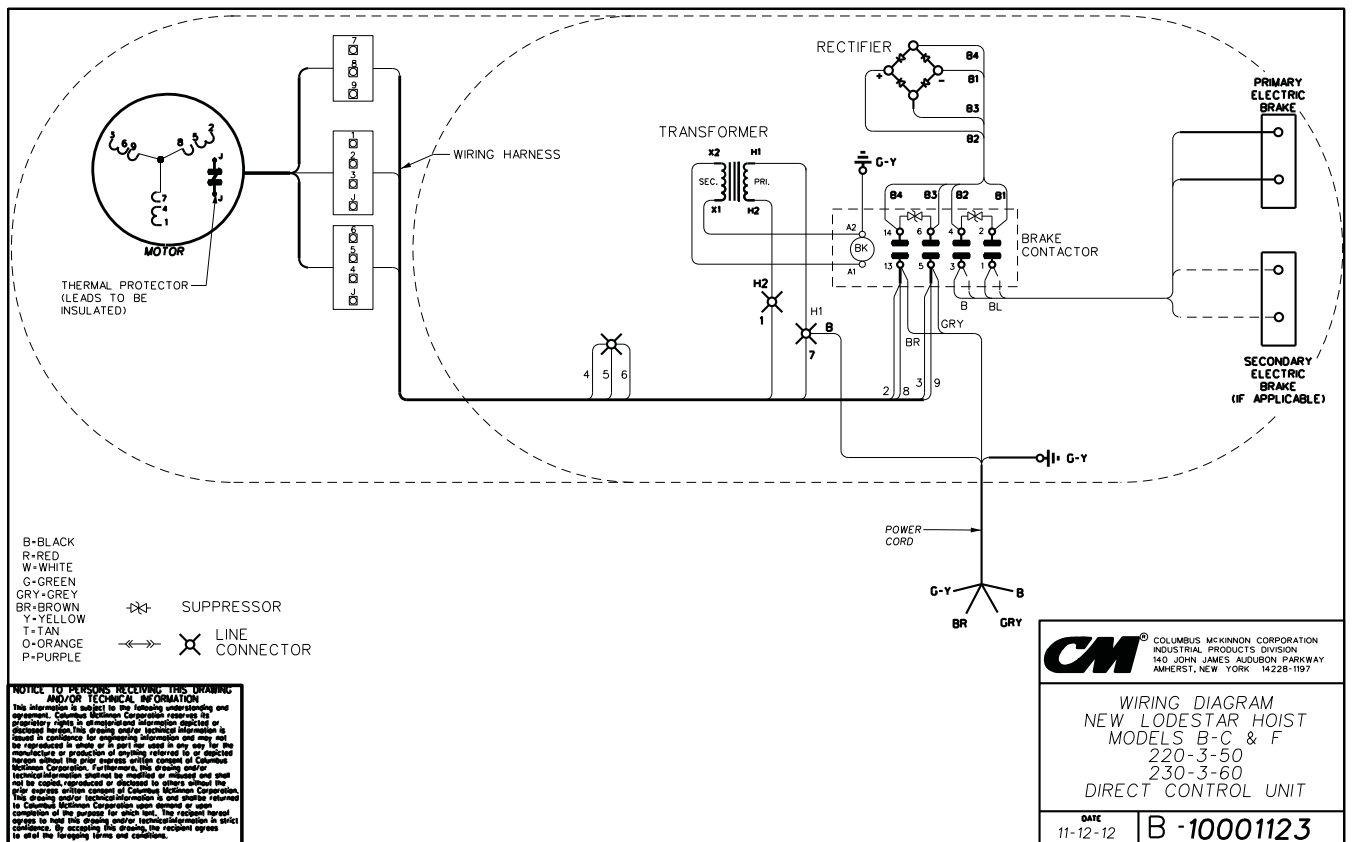
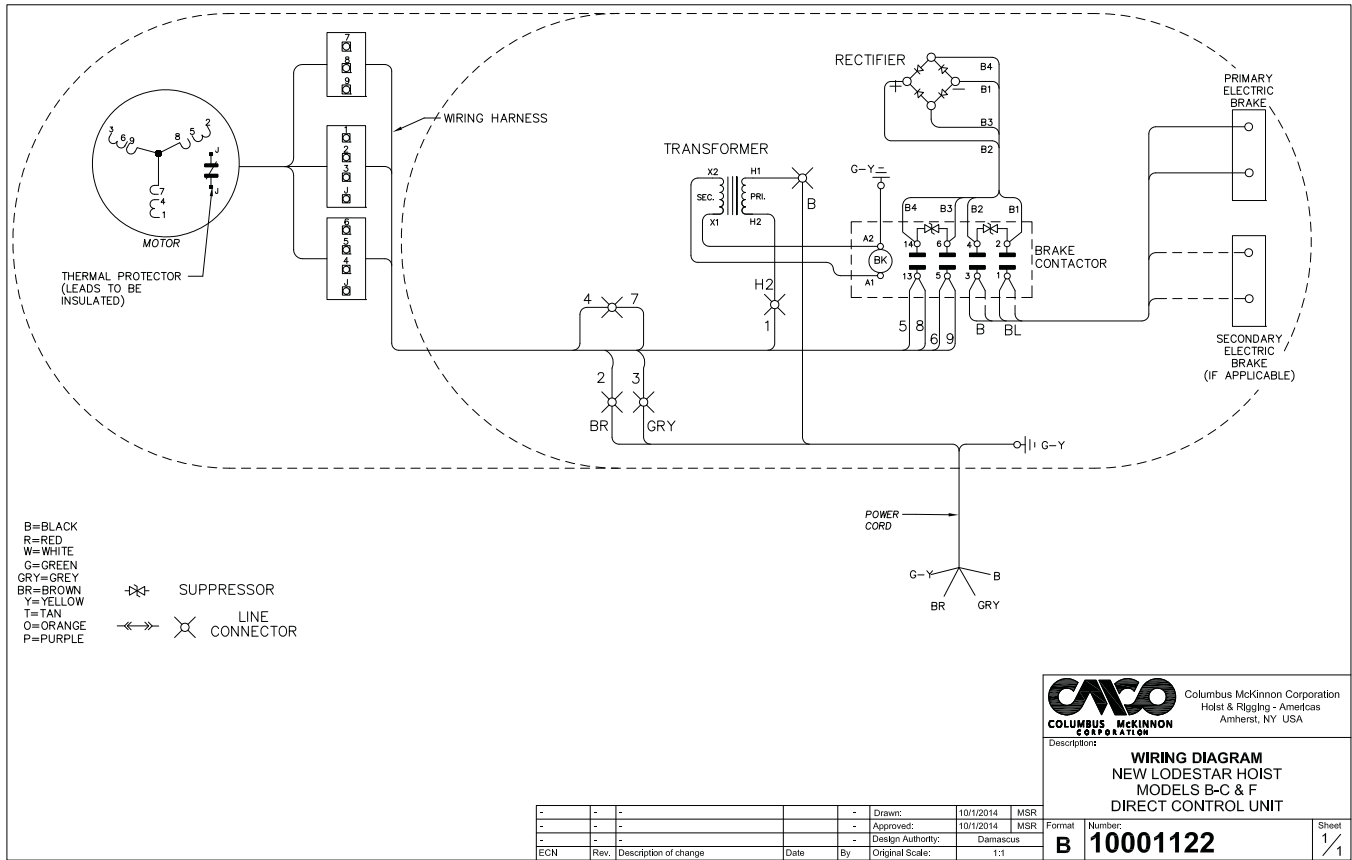
Format: **B**

Sheet: **1 / 1**

ECN	Rev.	Description of change	Date	By	Original Scale:
150900	AA	ADOPT	6/16/2015	MRLDM	MSR
-	-	-	-	-	MSR
-	-	-	-	-	Damascus
-	-	-	-	-	1:1

FIGURE 22. TYPICAL WIRING DIAGRAMS (DIRECT CONTROL)

Wiring Diagrams shown are representative. Consult diagram in hoist or furnished with unit.

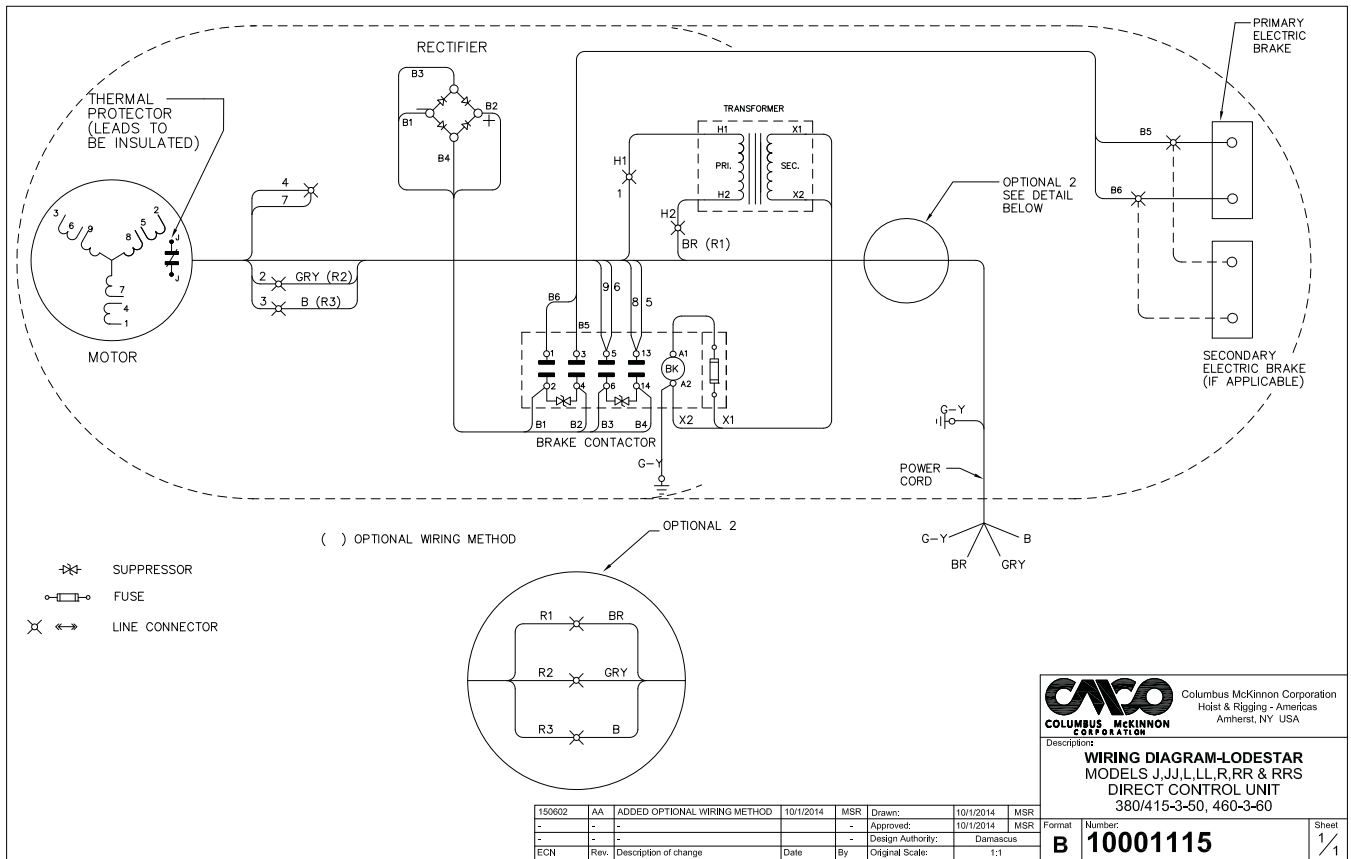


NOTICE TO PERSONS RECEIVING THIS DRAWING AND/OR TECHNICAL INFORMATION

This information is subject to the following understanding and agreement. Columbus McKinnon Corporation reserves its proprietary rights in confidential information depicted or described herein. This drawing and/or technical information is issued in confidence for engineering information and may not be reproduced in whole or in part for use in any way for the manufacture or production of anything referred to or depicted herein without the prior express written consent of Columbus McKinnon Corporation. Furthermore, this drawing and/or technical information is not to be copied, reproduced or disclosed to others without the prior written consent of Columbus McKinnon Corporation. This drawing and/or technical information is one member referred to in Columbus McKinnon Corporation user manuals and is provided for the purpose of such use. The recipient agrees to hold this drawing and/or technical information in strict confidence. By accepting this drawing, the recipient agrees to effect the foregoing terms and conditions.

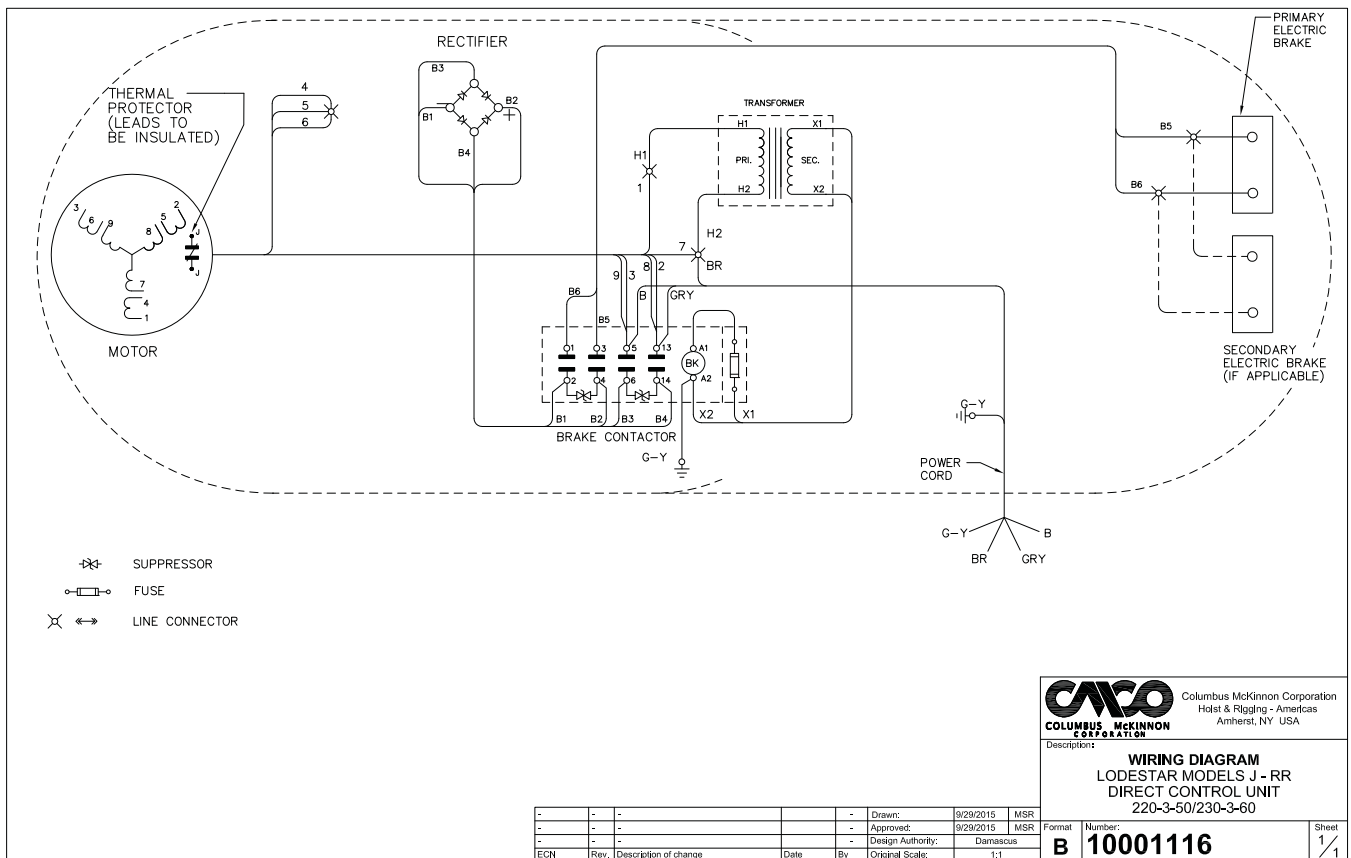
FIGURE 23. TYPICAL WIRING DIAGRAMS (DIRECT CONTROL)

Wiring Diagrams shown are representative. Consult diagram in hoist or furnished with unit.



CMCO Columbus McKinnon Corporation
 Hoist & Rigging - Americas
 Amherst, NY USA

WIRING DIAGRAM - LODESTAR
 MODELS J, JJ, L, LL, R, RR & RRS
 DIRECT CONTROL UNIT
 380/415-3-50, 460-3-60



CMCO Columbus McKinnon Corporation
 Hoist & Rigging - Americas
 Amherst, NY USA

WIRING DIAGRAM
 LODESTAR MODELS J - RR
 DIRECT CONTROL UNIT
 220-3-50/230-3-60